

SONOMA
STATE
UNIVERSITY

Join!
The
Pack

SEAWOLF

DECISION

DAY

Deposit Deadline
June 1, 2024

SCHEDULE OF THE DAY

9:30AM Check-in and enjoy coffee and pastries while listening to SSU's very own Jazz Band in the Trione Courtyard at the Green Music Center.

10:00AM **Welcome to Sonoma State University**

Start your morning at the world-class Green Music Center, the cornerstone of SSU's commitment to the arts. You'll receive an overview of the day's events and meet fellow Seawolves.

11:00AM - 3:00PM **EXPLORE SSU**

Department Tabling Fair

Darwin/Stevenson Quad
(in between 17 and 44 on map)

Meet SSU faculty and learn about the different academic programs we offer. Advisors will also be available, and if you get hungry while mixing and mingling, grab a quick snack at our kiosk, Toast.

Clubs & Resources Fair

Salazar Plaza
(in between 17 and 34 on map)

SSU offers more than 120 clubs and organizations, and these awesome Seawolves can't wait to meet you! Additionally, the Financial Aid table will be distributing Financial Aid award letters, so you'll definitely want to stop by.

Seawolf Service Center and Financial Aid

Salazar Hall
(34 on map)

Pay your enrollment deposit (credit cards accepted) and meet the helpful staff at the Seawolf Service Center and Financial Aid offices. Once you pay your enrollment deposit, be sure to pick up your SSU t-shirt at the Student Involvement Tent right outside Salazar Hall.

Pay your enrollment deposit today in the Seawolf Service Center!

Welcome Center

(c on map)

Come say “hi” to our campus tour guides. We’ll be offering 30-minute campus tours at 11:30am and 1:30pm.

Recreation Center

(33 on map)

Explore SSU’s Campus Recreation Center. With a rock climbing wall, basketball courts, indoor track, ping pong tables, there is something for everyone to enjoy!

University Store

Second Floor of the Student Center

(6 on map)

Are you ready to rep SSU? Visit the University Store for Sonoma State gear, as well as snacks, gifts and convenience items.

Kitchens and Sip

First Floor of the Student Center

(45 on map)

Enjoy an all-you-care-to-eat experience at The Kitchens. Have your QR code ready for our culinary staff to invite you in for a complimentary lunch at your designated lunch time. Visit SIP for a Starbucks classic drink or a tasty grab-and-go snack.

Art Gallery

(3 on map)

The Art Department is looking forward to meeting you and giving you a tour of our inspiring Art Gallery.

Person Theater

(31 on map)

Join the Department of Theatre Arts and Dance for an inside peek and tour of SSU’s Evert B. Person Theatre. Experience student-created work from our recent musical, In the Heights, and Spring Dance featuring dance program student choreographers. It will be fun and informative! Tours will be offered at 11:30am and 1:30pm.

Pay your enrollment deposit today in the Seawolf Service Center!

Schulz Information Center and Makerspace (37 on map)

More than just a library, the Schulz Information Center is filled with an abundance of resources, as well as a Makerspace for you to tap into your creativity.

Housing Showroom Tours

Meet in Sauvignon Village (First-Year and Transfer Students)

(35 on map)

And / Or

Meet in Beaujolais Village (Transfer Students)
(5 on map)

See why our residence halls are ranked #1 in the CSU system for the best campus housing. Our campus housing is not traditional. Our living spaces are open and spacious with suite-style and apartment-style housing. We will have showrooms available to view in Sauvignon, Verdote, Beaujolais and Tuscany Villages.

11:15AM - 12:00PM

EXPLORE YOUR MAJOR

These sessions are reserved for Transfer Students.

Arts & Humanities

Dean Ed Beebout

Warren/Ives 101

(25 on map)

Majors include: American Multicultural Studies, Art History, Art Studio, Chicano and Latino Studies, Cinematic Arts & Technology, Communication and Media Studies, English, French, Hutchins School of Liberal Studies, Music, Philosophy, Spanish, and Theatre Arts and Dance

Business & Economics

Dean Michael Visser, Ph.D.

Stevenson 1300

(44 on map)

Majors include: Business Administration and Economics

Pay your enrollment deposit today in the Seawolf Service Center!

Education

Dean Laura Alamillo, Ph.D.
Stevenson 1301
(44 on map)

Major: Early Childhood Studies

Nursing

Darwin 102
(17 on map)

Majors include: Pre-Nursing, Pre-Licensure Bachelor's of Science and Post-Licensure Bachelor's of Science

Science & Technology

Dean Elisabeth Wade, Ph.D.
Darwin 103
(17 on map)

Majors include: Biochemistry, Biology, Chemistry, Computer Science, Earth and Environmental Science, Electrical Engineering, Geology, Kinesiology, Mathematics, Physical Science, Physics, and Statistics

Social Sciences

Dean Troi Carleton, Ph.D.
Stevenson 1400
(44 on map)

Majors include: Anthropology, Criminology and Criminal Justice Studies, Environmental Science, Geography and Management, Environmental Science, Geography and Planning, Global Studies, History, Human Development, Liberal Studies Ukiah, Political Science, Psychology, Sociology, and Women's and Gender Studies

12:00PM - 1:30PM



POP: PRE-ORIENTATION PROGRAM FOR TRANSFER STUDENTS

Various Computer Labs in Stevenson, Darwin and Schulz Information Center

Are you a transfer student who took advantage of our early-bird special offer and received a registration appointment? If so, please check-in to your assigned computer lab, which was emailed to you. For those who don't have a registration appointment, no worries, you can still explore all of the offerings SSU has in store for you, including the Department and Resource Fair!

Pay your enrollment deposit today in the Seawolf Service Center!

12:30PM - 1:00PM

EXPLORE YOUR MAJOR

These sessions are reserved for First-Year Students.

Arts & Humanities

Dean Ed Beebout
Warren/Ives 101
(25 on map)

Majors include: American Multicultural Studies, Art History, Art Studio, Chicano and Latino Studies, Cinematic Arts & Technology, Communication and Media Studies, English, French, Hutchins School of Liberal Studies, Music, Philosophy, Spanish, and Theatre Arts and Dance

Business & Economics

Dean Michael Visser, Ph.D.
Stevenson 1300
(44 on map)

Majors include: Business Administration and Economics

Education

Dean Laura Alamillo, Ph.D.
Stevenson 1301
(44 on map)

Major: Early Childhood Studies

Nursing

Darwin 102
(17 on map)

Majors include: Pre-Nursing, Pre-Licensure Bachelor's of Science and Post-Licensure Bachelor's of Science

Science & Technology

Dean Elisabeth Wade, Ph.D.
Darwin 103
(17 on map)

Majors include: Biochemistry, Biology, Chemistry, Computer Science, Earth and Environmental Science, Electrical Engineering, Geology, Kinesiology, Mathematics, Physical Science, Physics, and Statistics

Pay your enrollment deposit today in the Seawolf Service Center!

Social Sciences

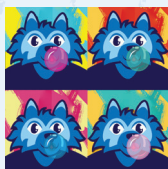
Dean Troi Carleton, Ph.D.
Stevenson 1400
(44 on map)

Majors include: Anthropology, Criminology and Criminal Justice Studies, Environmental Science, Environmental Studies, Global Studies, History, Human Development, Liberal Studies Ukiah, Political Science, Psychology, Sociology, and Women's and Gender Studies

Undeclared Students

Third Floor Student Center, Ballroom A
(45 on map)

1:15PM - 2:00PM



POP: PRE-ORIENTATION PROGRAM FOR OUR FIRST-YEAR STUDENTS

Everest Gym in the Recreation Center
(33 on map)

Sonoma State University wants to celebrate you, our future Seawolves! Please join us at our fun-filled POP reception where you will receive information about orientation and advising, as well as Move-In Day and Week of Welcome.

2:00 - 2:30PM

PROGRAM SESSIONS

Financial Aid Presentation

Stevenson 1301
(44 on map)

The goal of the financial aid presentation is to assist students and their families in obtaining and understanding financial aid options.

Housing / Culinary

Stevenson 1300
(44 on map)

Did you know our campus housing is voted #1 within the entire CSU system? At this presentation, you will learn about the different housing options, as well as our living-learning communities, while Culinary Services will discuss dining options and meal plans.

Pay your enrollment deposit today in the Seawolf Service Center!

Sonoma State: Los Próximos Pasos

Warren/ Ives 101
(25 on map)

Una oportunidad para descubrir más sobre Sonoma State y hacer preguntas a nuestra estudiante Emily Montiel Peregrina.

Parent Session: Helping your student transition to college

Stevenson 1400
(44 on map)

2:35 - 3:05PM

PROGRAM SESSIONS

Financial Aid Presentation

Stevenson 1300
(44 on map)

The goal of the financial aid presentation is to assist students and their families in obtaining and understanding financial aid options.

Housing / Culinary

Stevenson 1301
(44 on map)

Did you know our campus housing is voted #1 within the entire CSU system? At this presentation, you will learn about the different housing options, as well as our living-learning communities, while Culinary Services will discuss dining options and meal plans.

First Generation Presentation

Warren/ Ives 101
(25 on map)

Calling all first-generation* students! As a First-Gen Forward Institution, Sonoma State understands and supports the unique needs of our first-gen Seawolves. Join this session to learn about the resources available to support your success at Sonoma State!
*First-generation: A student whose parent(s)/ guardian(s) have not completed a four-year degree.

Pay your enrollment deposit today in the Seawolf Service Center!

Parent Session: Helping your student transition to college

Stevenson 1400
(44 on map)

Educational Opportunity Program

Darwin 103
(17 on map)

Interested in learning more about our Educational Opportunity Program (EOP)? Visit this presentation and get your questions answered.

Disability Services for Students

Stevenson 1201
(44 on map)

Learn more about Disability Services for Students (DSS) and how they ensure equal access to students with disabilities by providing appropriate accommodations and specialized support services, and by providing guidance.

Hutchins School of Liberal Studies

Stevenson 1101
(44 on map)

Learn about the lower division General Education Program, as well as three major tracks, including a 4-year accelerated Liberal Studies B.A.-Multiple Subject Teaching Credential Program.

3:10PM - 3:40PM

PROGRAM SESSIONS

Financial Aid Presentation

Stevenson 1300
(44 on map)

The goal of the financial aid presentation is to assist students and their families in obtaining and understanding financial aid options.

Pay your enrollment deposit today in the Seawolf Service Center!

Presentación de ayuda financiera en español

Stevenson 1301
(44 on map)

El objetivo de la presentación de ayuda financiera es ayudar a los estudiantes y sus familias a obtener y comprender las opciones de ayuda financiera.

Educational Opportunity Program

Darwin 103
(17 on map)

Interested in learning more about our Educational Opportunity Program (EOP)? Visit this presentation and get your questions answered.

Disability Services for Students

Stevenson 1201
(44 on map)

Learn more about Disability Services for Students (DSS) and how they ensure equal access to students with disabilities by providing appropriate accommodations and specialized support services, and by providing guidance.

Parent Session: Helping your student transition to college

Stevenson 1400
(44 on map)

SSU RESOURCE DIRECTORY



Admissions

admissions@sonoma.edu
(707) 664-2778 (Main Line)

Advising Central

advisingcentral@sonoma.edu

Disability Services for Students (DSS)

disability.services@sonoma.edu
Phone number: (707) 664-2677 (dial 711 for Relay)

Educational Opportunity Program (EOP)

eop@sonoma.edu
applyeop@sonoma.edu
(707) 664-2427

Financial Aid

finaid@sonoma.edu
(707) 664-2389

Orientation

orientation@sonoma.edu
(707) 664-4464

Residential Education and Campus Housing (REACH - Campus Housing)

housing@sonoma.edu
(707) 664-2541

Seawolf Service Center

seawolf.servicecenter@sonoma.edu
707-664-2308

Welcome Center/ Campus Tours

outreach@sonoma.edu
(707) 664-3020
(707) 664-3029

Pay your enrollment deposit today in the Seawolf Service Center!

CAMPUS MAP



- 1 Alumni Grove
- 2 Anthropological Studies Center
- 3 Art Building
- 4 Aquatic Pool
- 5 Beaujolais Village
- 6 Bookstore
- 7 Butterfly Garden
- 8 Pre-Collegiate Programs
- 9 Cabernet Village
- C Campus Tours/Welcomer Center
- 10 Building 17A & 17B/CAPS
- 11 Carson Hall
- 12 Central Plant
- 13 Chalk Hill
- 14 Charlie Brown's Café
- 15 Children's School
- 16 Cooperage
- 17 Darwin Hall
- 18 Environmental Technology Center
- 19 Facilities Management
- 20 Fieldhouse
- 21 Green Music Center
- 22 Gymnasium
- 23 Holocaust & Genocide Memorial Grove

- 24 International Hall
- 25 Ives Hall
- 26 Lakes
- 27 Library (Schulz Info Center)
- 28 Nichols Hall
- 29 Observatory
- 30 Parking & Information Centers
- 31 Person Theatre
- 32 Prelude
- 33 Recreation Center
- 34 Salazar Hall
- 35 Sauvignon Village
- 36 Schroeder Hall
- 37 Schulz Information Center
- 38 Seawolf Diamond
- 39 Seawolf Recreational Field
- 40 Seawolf Soccer Field
- 41 Seawolf Softball Field
- 42 Seawolf Stadium
- 43 Shipping & Receiving
- 44 Stevenson Hall
- 45 Student Center
- 46 Student Health Center
- 47 Tennis Courts

- 48 Toast
 - 49 Tuscany Village
 - 50 Vietnam Veterans' Memorial
 - 51 Verdort Village
 - 52 Weill Hall
 - 53 Wine Spectator Learning Center
 - 54 Zinfandel Village
- VISUAL & PERFORMING ARTS**
- 3 Art Building
 - 21 Green Music Center
 - 31 Person Theatre
 - 36 Schroeder Hall
 - 37 Library Galleries (Schulz Info Center)
 - 52 Weill Hall
- ATHLETIC FIELDS**
- 38 Seawolf Diamond
 - 39 Seawolf Recreational Field
 - 40 Seawolf Soccer Field
 - 41 Seawolf Softball Field
 - 42 Seawolf Stadium
 - 47 Tennis Courts

RESIDENCE HALLS

- 5 Beaujolais Village
- 9 Cabernet Village
- 35 Sauvignon Village
- 49 Tuscany Village
- 51 Verdort Village
- 54 Zinfandel Village

DINING

- 14 Charlie Brown's Café
- 32 Prelude
- 45 Inside Student Center: Lobo's Pizza & Pub Overlook The Kitchens Weyden & Brewster SIP
- 48 Toast
- 53 Inside Wine Spectator Learning Center: Stomping Grounds

MEMORIALS

- 23 Holocaust & Genocide Memorial Grove
- 50 Vietnam Veterans' Memorial